



## The unisex relaxed jogger pants wave terry

### Relaxed Fit

**XXS → 5XL**

## 350 GSM

### Description

Elastic at waistband and bottom hem

Flat drawcords in matching body colour finish clean without tipping inside waistband

### Embroidered eyelets

### Pocket lining in single jersey

Single Needle topstitch at pocket opening

Waistband, rise seams, inseam and leg cuff with double needle topstitch

## Composition

Shell - Seersucker Terry

100% Cotton - Organic Ring Spun Combed - 350.0 GSM

Panel washed

### Care instruction

Wash similar colours together, no ironing on print, wash and iron inside out.

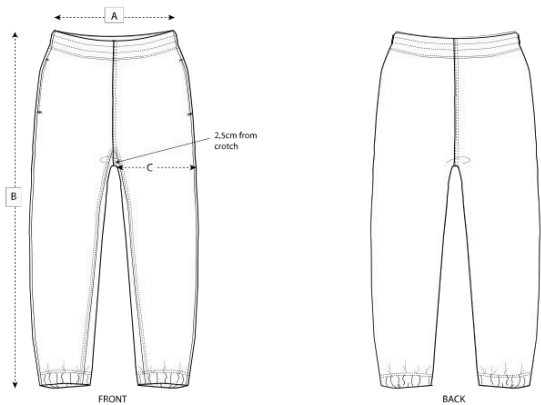


## Country of origin

Colors



Size Guide



Measurement in cm	XXS	XS	S	M	L	XL	XXL	3XL
A - Waist	33.5	35	37	39.5	42.5	45.5	48.5	49.5
B - Leg Length	100	100.5	101.5	103.5	105.5	107.5	109.5	109.5
C - Thigh	32.5	32.5	34	35	36	37.5	39	40

Packing

Sizes
Pieces / bag
Pieces / box